

PART OF NW 1/4, OF SE 1/4, OF SEC. 27, T.6N., R.1W., S.L.B. & M.

99

# NOB HILL ADDITION

BLOCK 32

IN OGDEN CITY

SCALE 1" = 50'

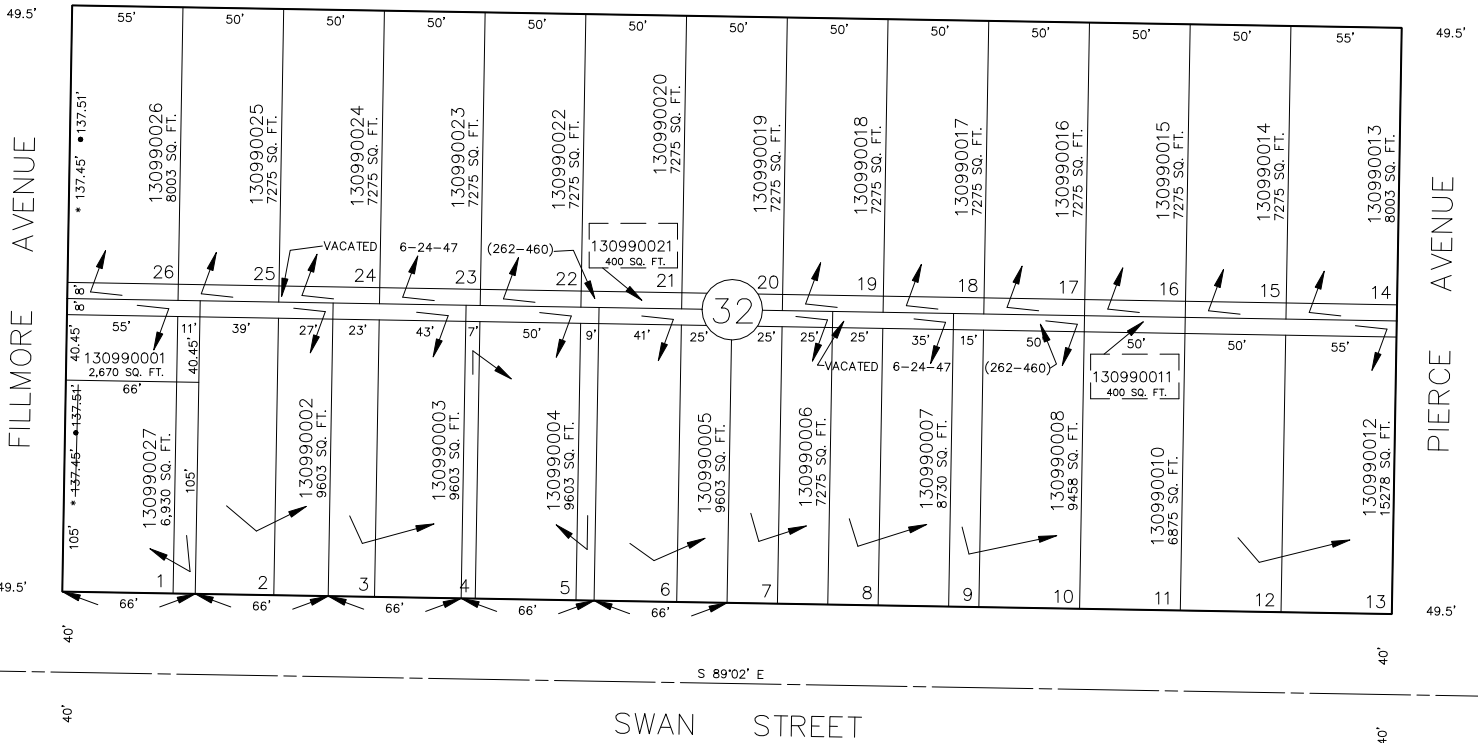
TAXING UNIT: 25

SEE PAGE 105

SEE PAGE 94

S 89°02' E

22ND STREET



SEE PAGE 100

• OGDEN CITY ENG. DEPT. PLATS  
• ORIG. DED. PLAT

FOR COMPLETE ENG DATA SEE  
ORIGINAL DEDICATION PLAT IN  
BOOK 6, PAGE 1 OF RECORDS.